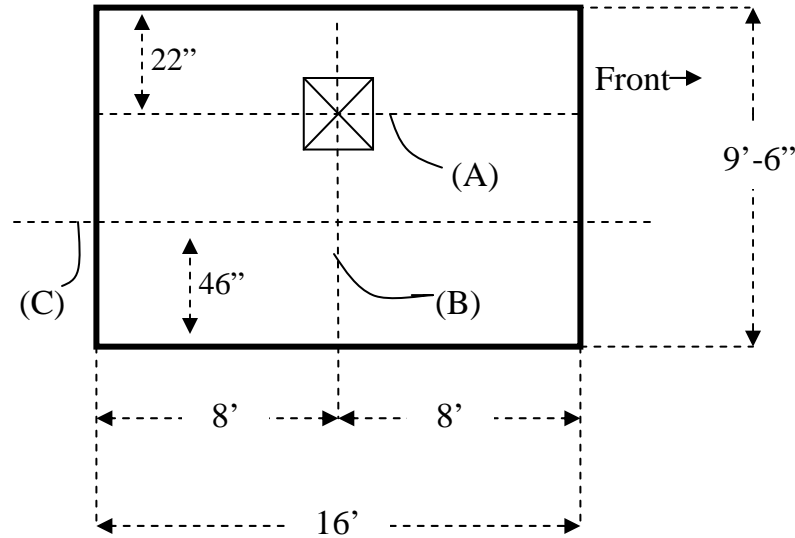


CONCRETE BASE PLAN VIEW Section "A-1"



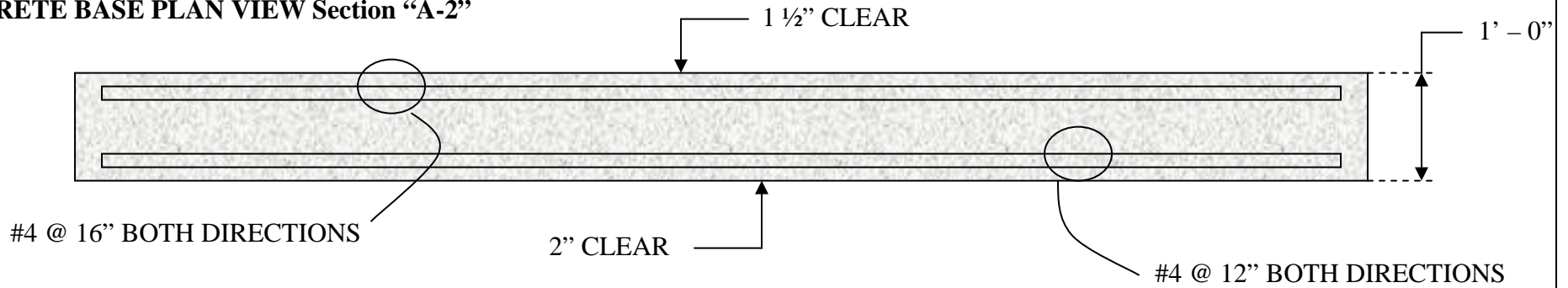
NOTES:

1. Concrete Rating $f'c = 3000$ psi
2. Minimum Soil Bearing Capacity = 1 Ton / SQ.FT.
3. Front of Slab Set Plumb to Structure's Vertical Edge

Legend

- (A) C_L Mast
- (B) C_L Mast & Cage
- (C) C_L Hoist Door

CONCRETE BASE PLAN VIEW Section "A-2"



Eagle Pro 5500
Single Unit



Service Department at (800) 860-5752

Base Slab Configuration